

# Chalet

# spec home collection



ready November 2010



not exactly as shown

## a

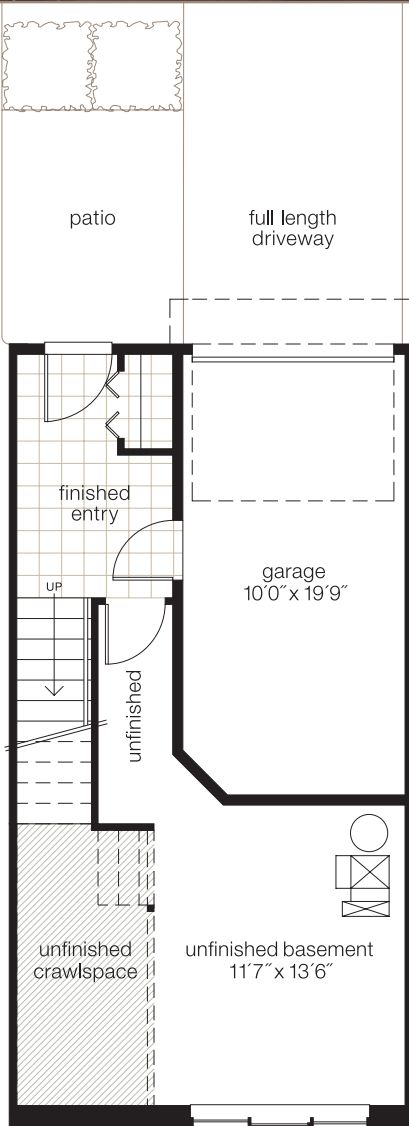
This home features a spacious, open main floor layout with a large galley style kitchen that boasts espresso-stained maple cabinetry, stainless steel appliances, granite counter tops, premium laminate hardwood flooring and a custom designed island/eating bar. Highlights include upper floor laundry, and a master ensuite as well as a second full bath. This home has a single-car garage and full driveway, and condo fees of only \$204.34/month.

address **68 Copperpond Close SE**  
 exterior scheme **Urban**  
 color scheme **Provence\***  
 bedrooms **2**  
 bathrooms **2.5**  
 total size **1443 sq.ft.**  
 condo fees **\$204.34/mth**

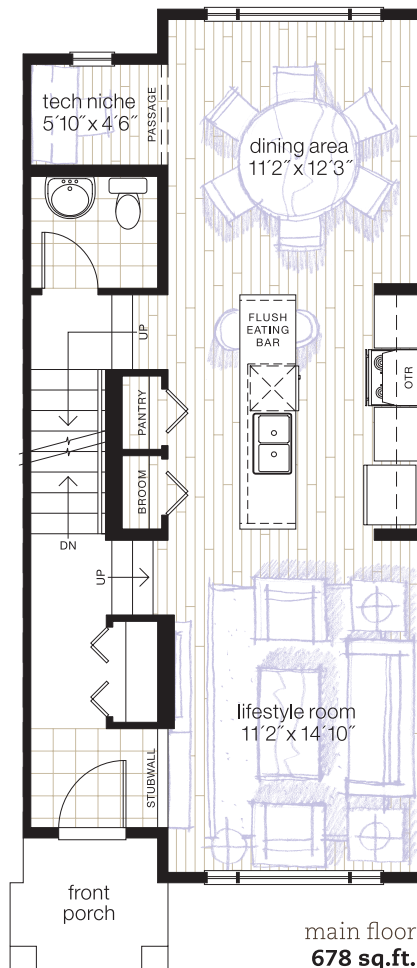
spectacular price  
**\$285,849\*\***

\*additional colour palettes to choose from in this floorplan.

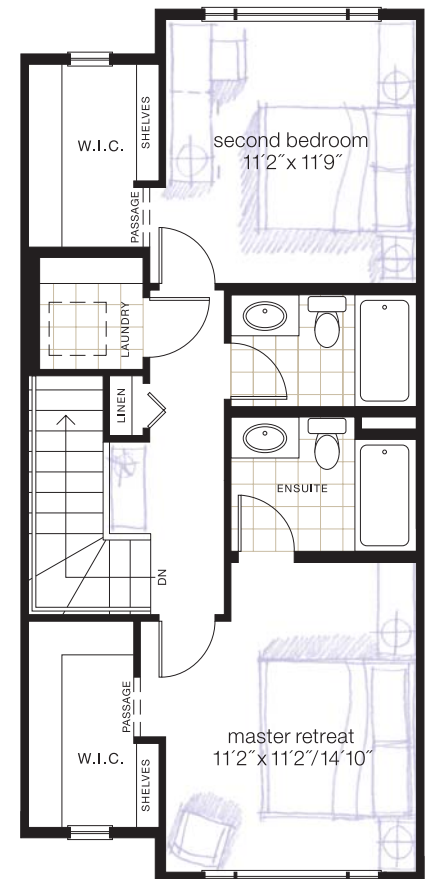
\*\*includes home, lot and GST



lower level  
130 sq.ft. finished



main floor  
678 sq.ft.



upper floor  
635 sq.ft.