

spec home collection

Choose any of our stylishly appointed spec homes* available for fast possession.

ready September 2010



ekko²

job# 2538016

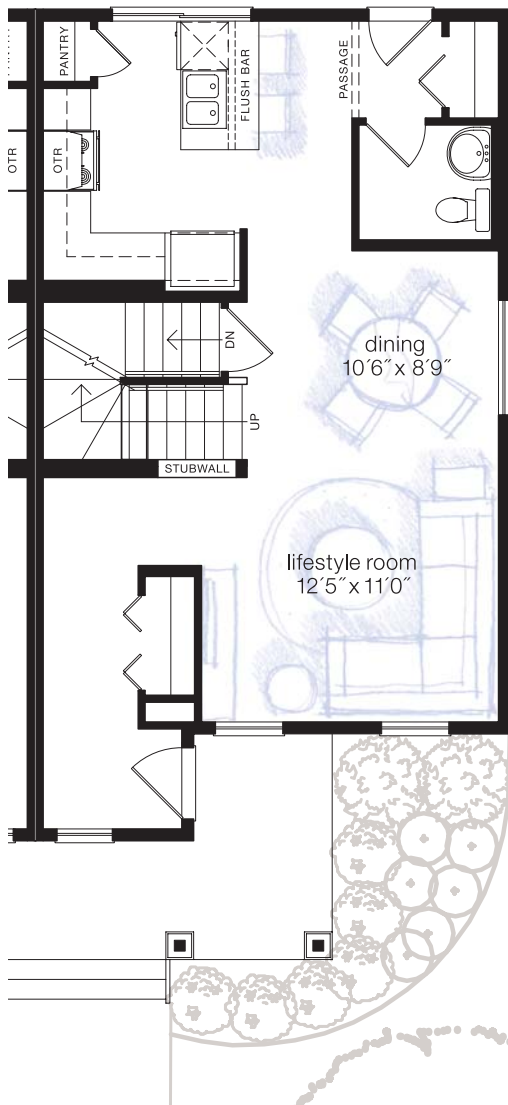
address **59 Copperpond Place SE**
home style **attached**
elevation style **Urban (palette UE)**
interior palette **Leather**
bedrooms **3**
bathrooms **2.5**
total size **1280 sq.ft.**

The open and functional layout of the Ekko 2a makes this a bright and inviting home, perfect for entertaining. The spacious kitchen features black appliances, warm Oak Java cabinetry, a pantry and an island with eating bar. The main floor features laminate hardwood floors, a large family room, and a dining area adjacent to the kitchen. The upper floor showcases a large master retreat with 3-piece ensuite and a large walk-in closet.

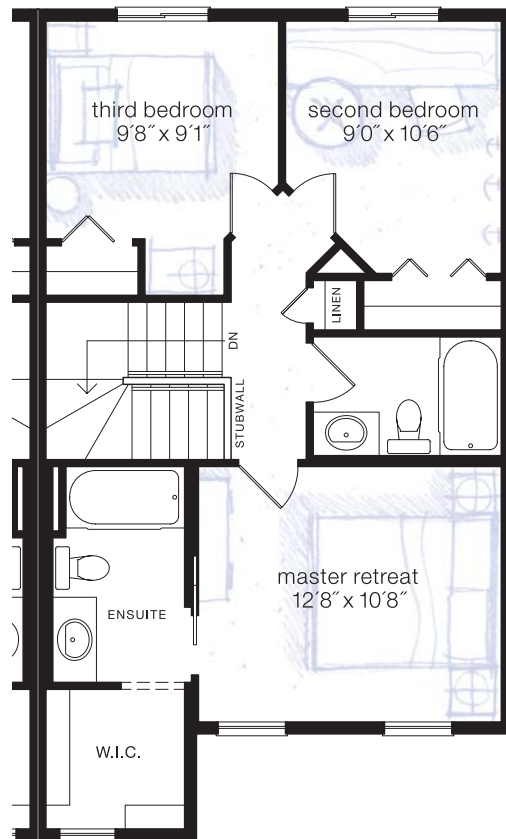
spectacular price

\$288,444*

*includes home, lot & GST



main floor
640 sq.ft.



upper floor
640 sq.ft.